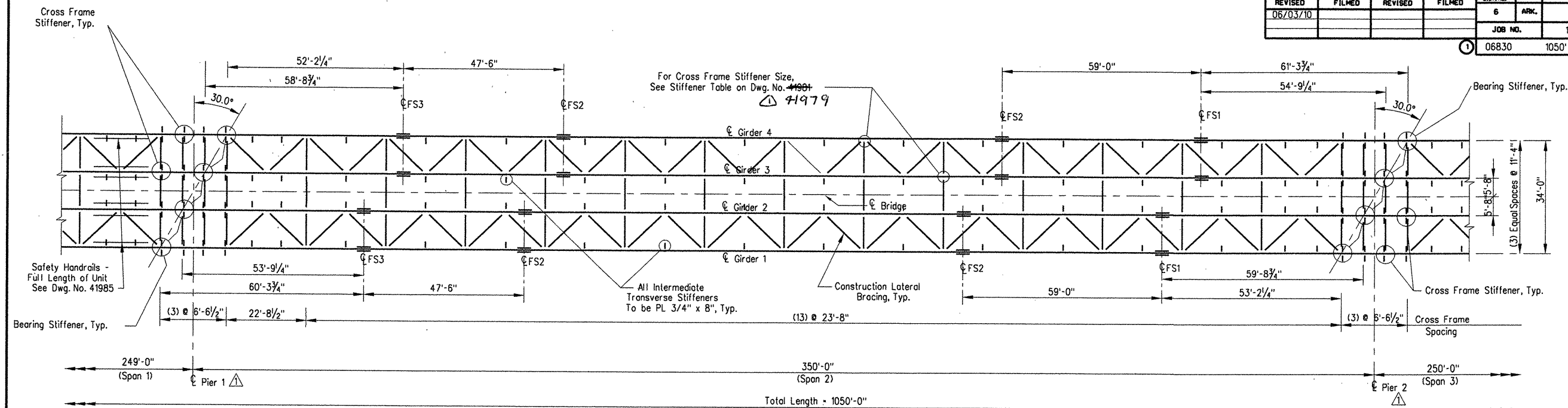


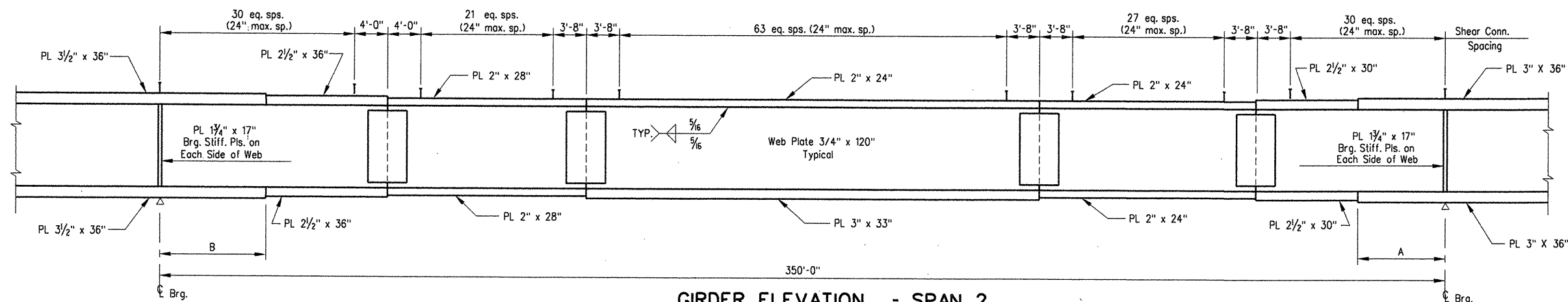
DATE REVISED	DATE FILMED	DATE REVISED	DATE FILMED	FED. ROAD DIST. NO.	STATE	FED. AID PROJ. NO.	SHEET NO.	TOTAL SHEETS
06/03/10				6	ARK.			
				JOB NO.	110394	68	196	
				06830	1050' FRMG. PLAN	41980		



FRAMING PLAN 1050' CONT. COMP. PLATE GIRDER UNIT 1 - SPAN 2

Scale: 1/16" = 1'-0"

Station 313+52 to Station 317+02



GIRDER ELEVATION - SPAN 2

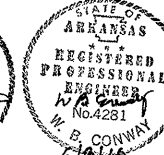
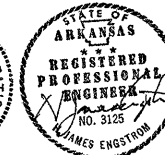
N.T.S.

TABLE OF GIRDER VARIABLES

Girder No.	A	B
1	35'-0"	37'-0"
2	30'-0"	35'-0"
3	35'-0"	35'-0"
4	35'-0"	35'-0"

NOTES

- All Steel To Be AASHTO M270, GR.50W.
- See Dwg. No. 41993 For General Notes.
- See Dwg. No. 42013 For Bearing Details.
- See Dwg. No. 41982 and Dwg. No. 41983 For Splices & Shear Connector Details.
- See Dwg. No. 42010, 42011, 42051 and Dwg. No. 42052 For Expansion Details.
- See Dwg. No. 41984 for Dead Load Deflection Table.
- See Dwg. No. 41985 and 41986 for Roadway Cross-Section.
- Bolted Field Splices Shown May Be Eliminated Or Shop Welded Splices May Be Substituted With Approval Of The Bridge Engineer. Payment Will Be Made On The Basis Of The Bolted Splices Shown.
- Bearing stiffeners shall be vertical in their final position.



REVISÉ AND REDRAWN BY AHTD
06/03/10 MJT CHECKED BY: HJE/MM

ALTERNATES NO. 1 & NO. 2 BRIDGE OVER WHITE RIVER (SHEET 2 OF 15)

DETAILS OF 1050'-0" CONT. COMP. PLATE GIRDER UNIT

WHITE RIVER STR. & APPRS.
(CLARENDON) (PH 11) (F)
MONROE COUNTY

Engstrom/Modjeski and Masters
ROUTE 79 SEC. 13

ARKANSAS STATE HIGHWAY COMMISSION

LITTLE ROCK, ARK.

DRAWN BY: DLG DATE: Nov. 07 FILENAME: b110394_s02
CHECKED BY: CDE DATE: Nov. 01 SCALE: 1/16" = 1'-0"
DESIGNED BY: JHC DATE: Nov. 01
BRIDGE NO. 06830 DRAWING NO. 41980

BRIDGE ENGINEER